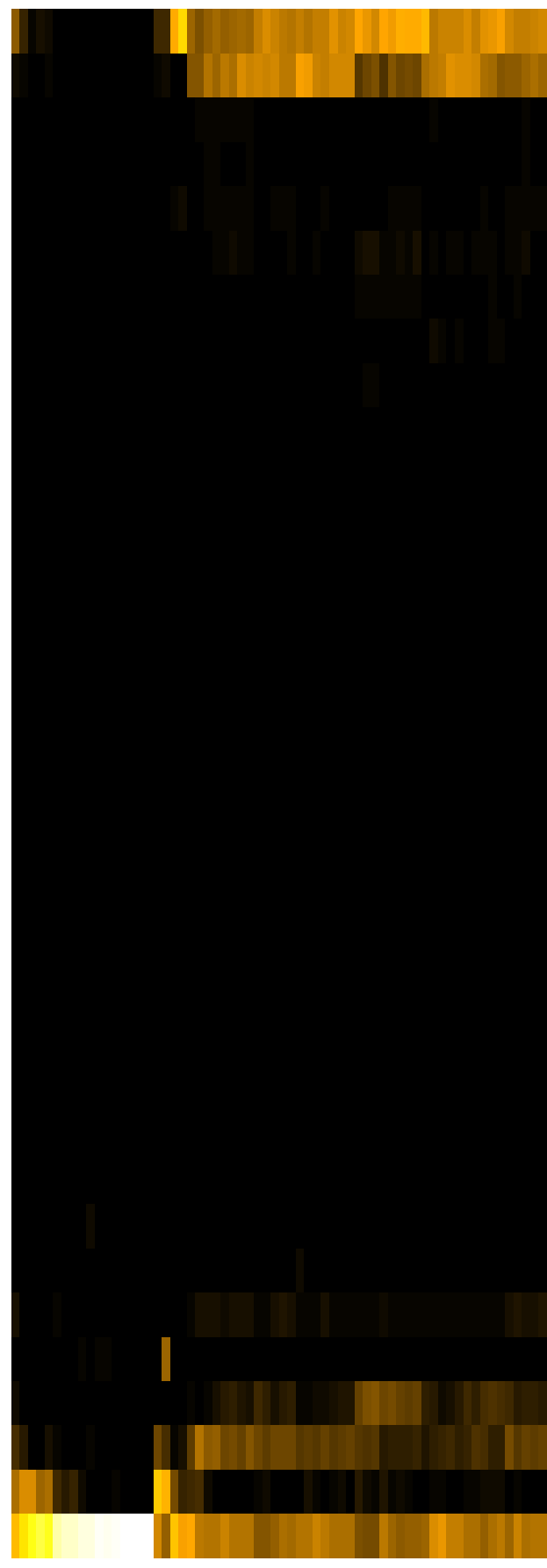
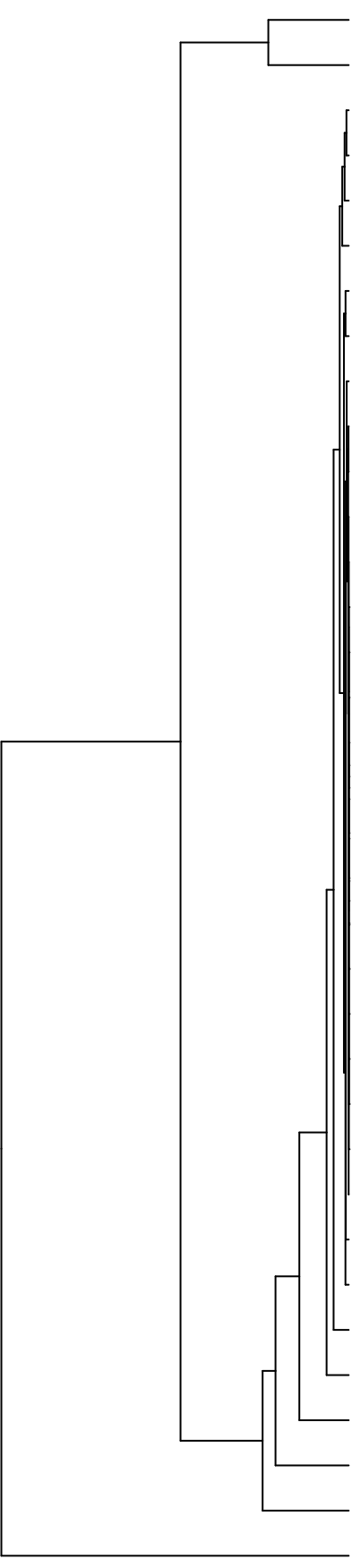


Group006  
 E Final -PMA  
 A Final -PMA



- Veillonellaceae
- Pasteurellaceae
- Porphyromonadaceae
- Gemellaceae
- Actinomycetaceae
- Campylobacteraceae
- Leptotrichiaceae
- Prevotellaceae
- Lachnospiraceae
- Erysipelotrichaceae
- Saccharibacteria\_(TM7)\_[F-1]
- Atopobiaceae
- Burkholderiaceae
- Absconditabacteria\_(SR1)\_[F-1]
- Propionibacteriaceae
- Flavobacteriaceae
- Comamonadaceae
- Moraxellaceae
- Sphingomonadaceae
- Microbacteriaceae
- Rhizobiaceae
- Phyllobacteriaceae
- Weeksellaceae
- Hymenobacteraceae
- Saccharibacteria\_(TM7)\_[F-2]
- Mycobacteriaceae
- Staphylococcaceae
- Pseudomonadaceae
- Yersiniaceae
- Carnobacteriaceae
- Micrococcaceae
- Fusobacteriaceae
- Neisseriaceae
- Enterobacteriaceae
- Streptococcaceae

- F28914.S397
- F28914.S395
- F28914.S425
- F28914.S589
- F28914.S431
- F28914.S430
- F28914.S588
- F28914.S585
- F28914.S432
- F28914.S427
- F28914.S393
- F28914.S105
- F28914.S106
- F28914.S110
- F28914.S109
- F28914.S233
- F28914.S270
- F28914.S073
- F28914.S077
- F28914.S240
- F28914.S237
- F28914.S556
- F28914.S554
- F28914.S558
- F28914.S557
- F28914.S080
- F28914.S079
- F28914.S239
- F28914.S234
- F28914.S399
- F28914.S268
- F28914.S272

Family

Samples